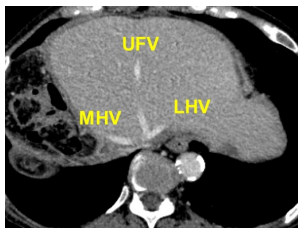


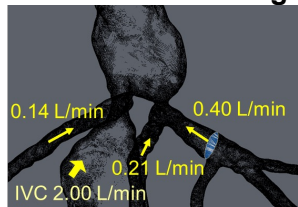
# Fluid analysis unveils hepatic venous outflow obstruction and its negative impact on post-transplant graft regeneration

 14 patients who underwent left-lobe LDLT

## Vascular geometries



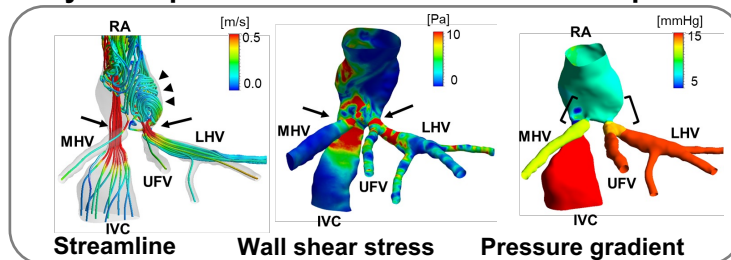
## Flow volume setting



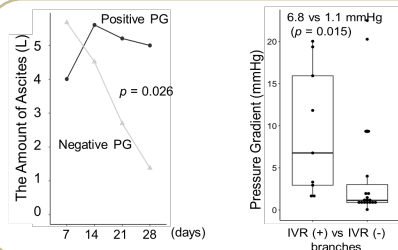
## Fluid simulation



## Hemodynamic parameters in the anastomosed hepatic veins



## Noninvasive detection of HVOO



## Inverse association between PG and graft regeneration

